



CAAC Design and Construction Update

8-18-2022



2022 Projects

New Buildings & Additions

Marshdale ES - Replacement HCM – GC GH Phipps

Construction

Move-in Oct 24



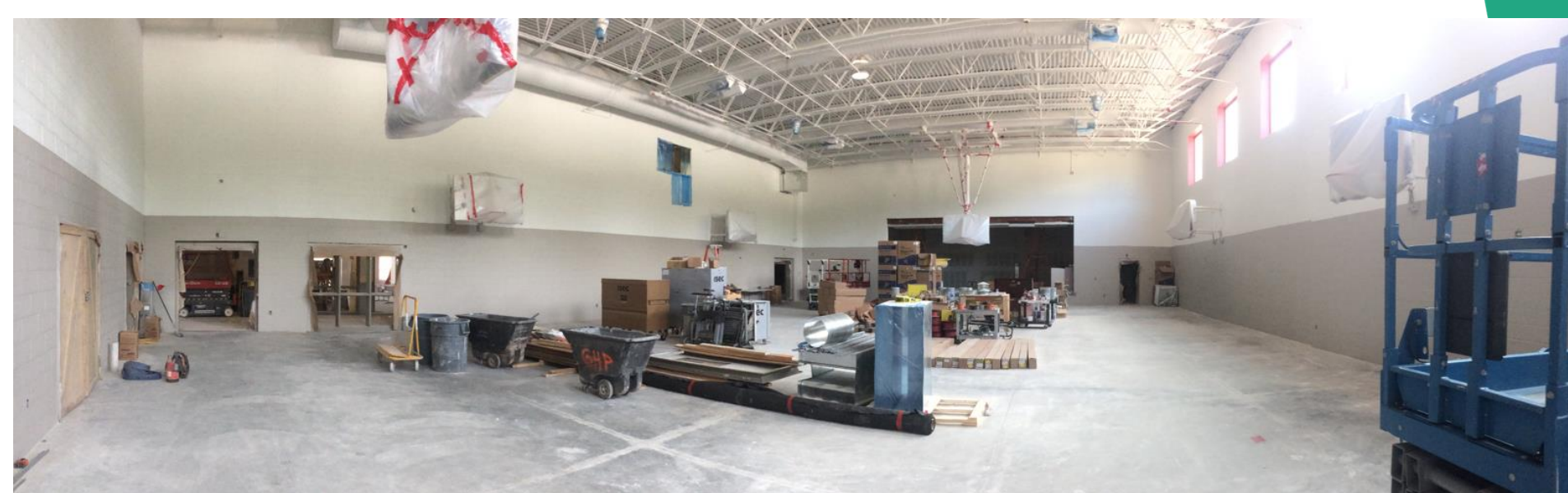
Marshdale ES - Replacement HCM - GC GH Phipps

Construction



Marshdale ES - Replacement HCM - CC GH Phipps

Construction



Marshdale ES - Replacement HCM – GC GH Phipps

Construction



Prospect Valley ES - Replacement MOA – GH Phipps

Construction



Prospect Valley ES - Replacement MOA – GH Phipps

Construction



Jeffco Open - Auditorium Addition HCM - Bassett

Construction



Jeffco Open - Auditorium Addition HCM - Bassett

Construction



Jeffco Open - Auditorium Addition HCM - Bassett

Construction



Jeffco Open - Auditorium Addition HCM - Bassett

Construction



Jeffco Open - Auditorium Addition

HCM - Bassett

Construction



Jeffco Open – Auditorium Addition HCM - Bassett

Construction



Ralston Valley HS
10 Additional Classrooms
EUA - Himmelman



Ralston Valley HS 10 Additional Classrooms EUA - Himmelman



Standley Lake HS – Aux Gym Addition Cannon – FCI Constructors

Construction



Standley Lake HS - Aux Gym Addition Cannon – FCI Constructors

Construction



Standley Lake HS - Aux Gym Addition Cannon – FCI Constructors

Construction



Standley Lake HS - Aux Gym Addition Cannon – FCI Constructors

Construction



Standley Lake HS - Aux Gym Addition Cannon – FCI Constructors

Construction



Standley Lake HS - Aux Gym Addition Cannon - FCI Constructors

Construction



Efficiency Future Ready
Windy Peak OEL
HCM – Bryan

Construction



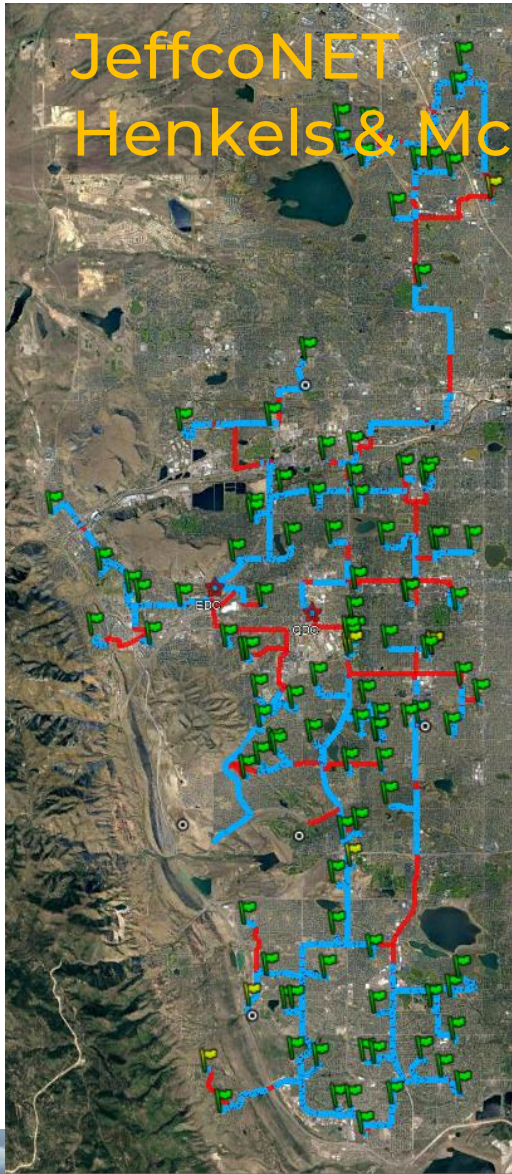
Efficiency Future Ready
Mount Evans OEL

HCM – GH Phipps

Construction



JeffcoNET Henkels & McCoy



Project Information

Project Start
April 29, 2020

Total Miles of conduit
to be bored 114

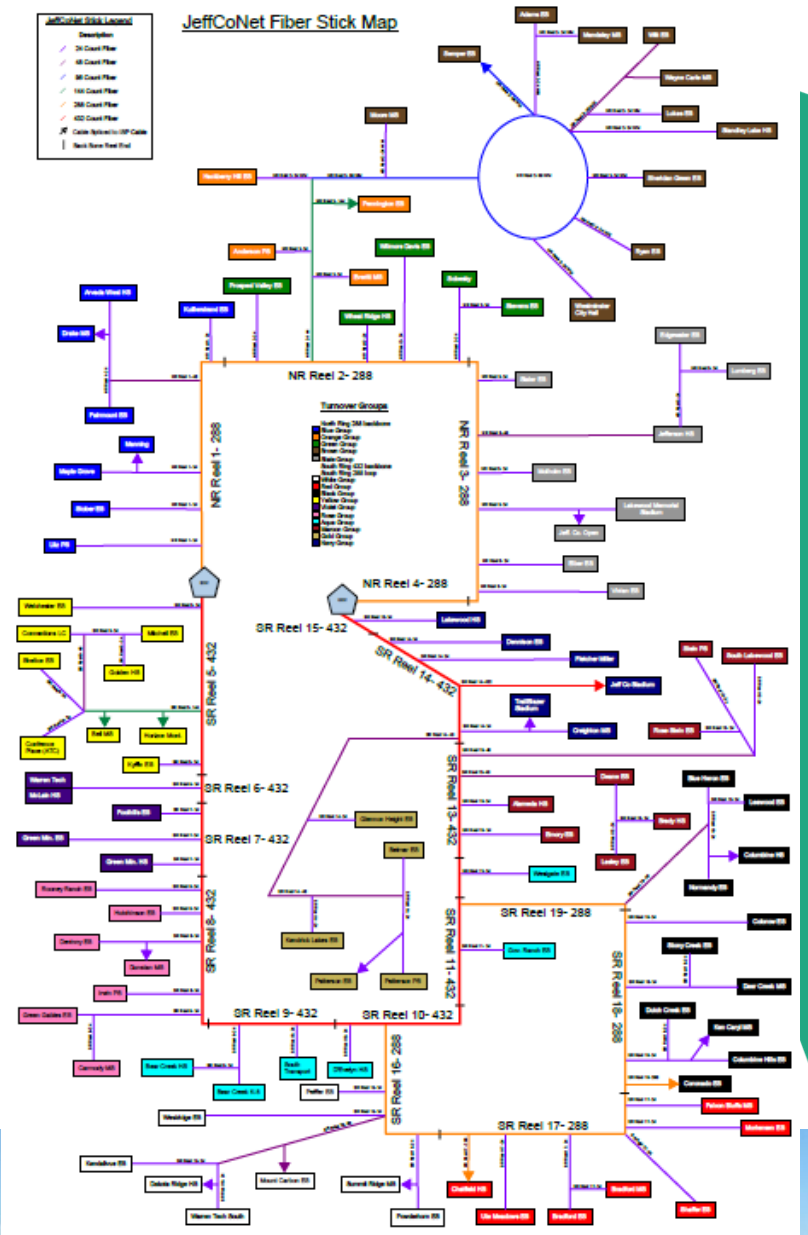
Miles installed
87 (76%) (Blue)

Fiber placed at
106 of 111 schools
(MDF to Street)

JeffCoNet Stick Legend

Description	
	20 Conduit Fiber
	40 Conduit Fiber
	60 Conduit Fiber
	80 Conduit Fiber
	100 Conduit Fiber
	120 Conduit Fiber
	140 Conduit Fiber
	160 Conduit Fiber
	180 Conduit Fiber
	200 Conduit Fiber
	220 Conduit Fiber
	240 Conduit Fiber
	260 Conduit Fiber
	280 Conduit Fiber
	300 Conduit Fiber
	320 Conduit Fiber
	340 Conduit Fiber
	360 Conduit Fiber
	380 Conduit Fiber
	400 Conduit Fiber
	420 Conduit Fiber
	440 Conduit Fiber
	460 Conduit Fiber
	480 Conduit Fiber
	500 Conduit Fiber
	520 Conduit Fiber
	540 Conduit Fiber
	560 Conduit Fiber
	580 Conduit Fiber
	600 Conduit Fiber
	620 Conduit Fiber
	640 Conduit Fiber
	660 Conduit Fiber
	680 Conduit Fiber
	700 Conduit Fiber
	720 Conduit Fiber
	740 Conduit Fiber
	760 Conduit Fiber
	780 Conduit Fiber
	800 Conduit Fiber
	820 Conduit Fiber
	840 Conduit Fiber
	860 Conduit Fiber
	880 Conduit Fiber
	900 Conduit Fiber
	920 Conduit Fiber
	940 Conduit Fiber
	960 Conduit Fiber
	980 Conduit Fiber
	1000 Conduit Fiber
	1020 Conduit Fiber
	1040 Conduit Fiber
	1060 Conduit Fiber
	1080 Conduit Fiber
	1100 Conduit Fiber
	1120 Conduit Fiber
	1140 Conduit Fiber
	1160 Conduit Fiber
	1180 Conduit Fiber
	1200 Conduit Fiber
	1220 Conduit Fiber
	1240 Conduit Fiber
	1260 Conduit Fiber
	1280 Conduit Fiber
	1300 Conduit Fiber
	1320 Conduit Fiber
	1340 Conduit Fiber
	1360 Conduit Fiber
	1380 Conduit Fiber
	1400 Conduit Fiber
	1420 Conduit Fiber
	1440 Conduit Fiber
	1460 Conduit Fiber
	1480 Conduit Fiber
	1500 Conduit Fiber
	1520 Conduit Fiber
	1540 Conduit Fiber
	1560 Conduit Fiber
	1580 Conduit Fiber
	1600 Conduit Fiber
	1620 Conduit Fiber
	1640 Conduit Fiber
	1660 Conduit Fiber
	1680 Conduit Fiber
	1700 Conduit Fiber
	1720 Conduit Fiber
	1740 Conduit Fiber
	1760 Conduit Fiber
	1780 Conduit Fiber
	1800 Conduit Fiber
	1820 Conduit Fiber
	1840 Conduit Fiber
	1860 Conduit Fiber
	1880 Conduit Fiber
	1900 Conduit Fiber
	1920 Conduit Fiber
	1940 Conduit Fiber
	1960 Conduit Fiber
	1980 Conduit Fiber
	2000 Conduit Fiber

JeffCoNet Fiber Stick Map



D'Evelyn – 8 CR Addition HCM – GC Himmelman

Construction



D'Evelyn – 8 CR Addition
HCM – GC Himmelman

Construction



D'Evelyn – 8 CR Addition
HCM – GC Himmelman

Construction



D'Evelyn – 8 CR Addition HCM – GC Himmelman

Construction



Evergreen MS Efficiency & Future Ready Construction

AMD – Haselden



Evergreen MS Efficiency & Future Ready AMD – Haselden

Construction



Evergreen MS Efficiency & Future Ready Construction

AMD – Haselden



Evergreen MS Efficiency & Future Ready AMD – Haselden

Construction



Evergreen HS
Efficiency Future Ready
DLR – CMGC/JHL

Construction



Evergreen HS
Efficiency Future Ready
DLR – CMGC JHL

Construction



Evergreen HS
Efficiency Future Ready
DLR – CMGC JHL

Construction



Evergreen HS
Efficiency Future Ready
DLR – CMGC JHL

Construction



Powderhorn ES – 6 Classroom Addition Hollis & Miller – Himmelman

Construction



Powderhorn ES - 6 Classroom Addition Hollis & Miller – Himmelman

Construction



Powderhorn ES - 6 Classroom Addition Hollis & Miller – Himmelman

Construction



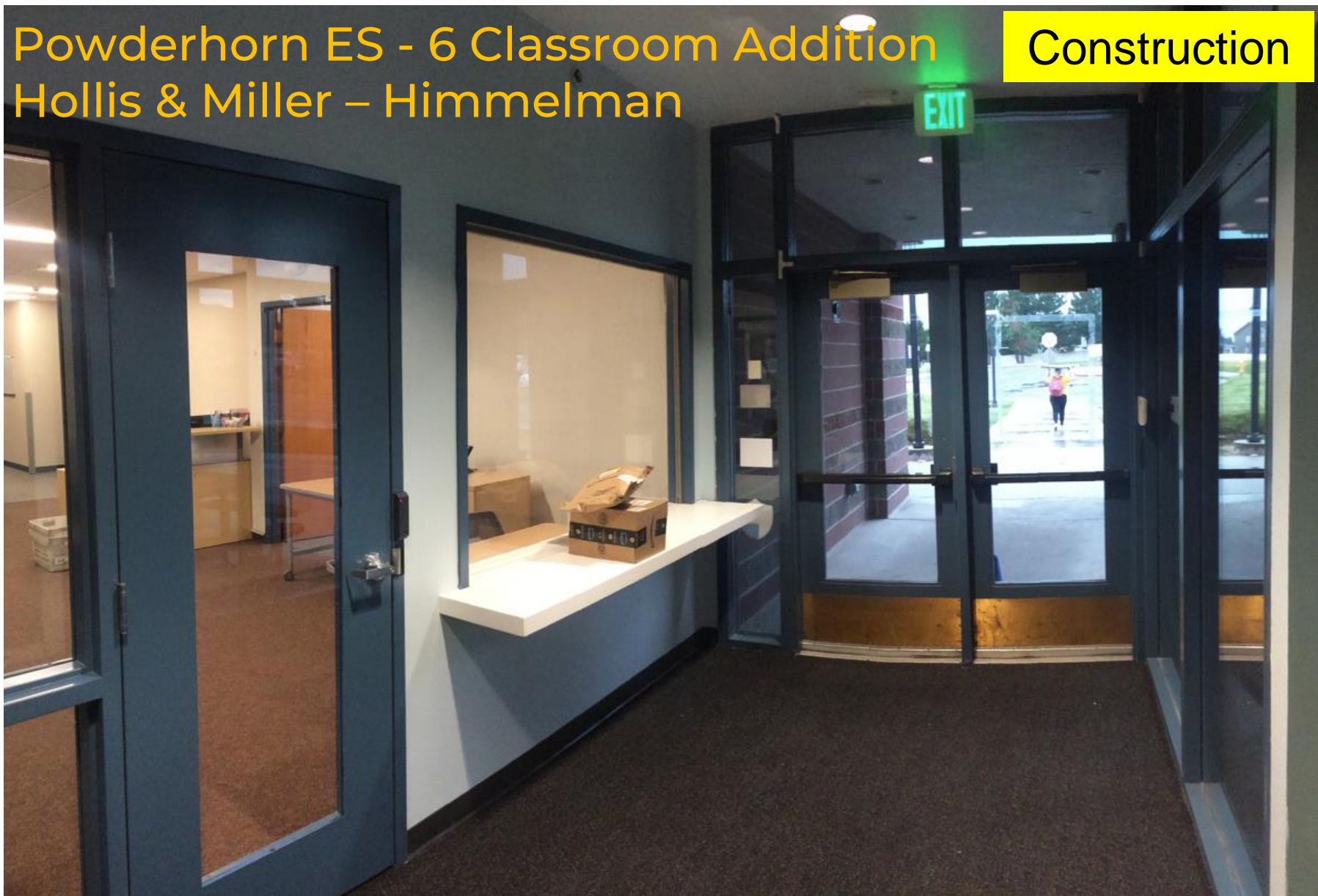
Powderhorn ES - 6 Classroom Addition Hollis & Miller – Himmelman

Construction



Powderhorn ES - 6 Classroom Addition Hollis & Miller – Himmelman

Construction



2022

37 - Efficiency Future
Ready
&
DW projects

Efficiency Future Ready Golden HS

Construction

H&M – Singletrack



Efficiency Future Ready Mitchell ES

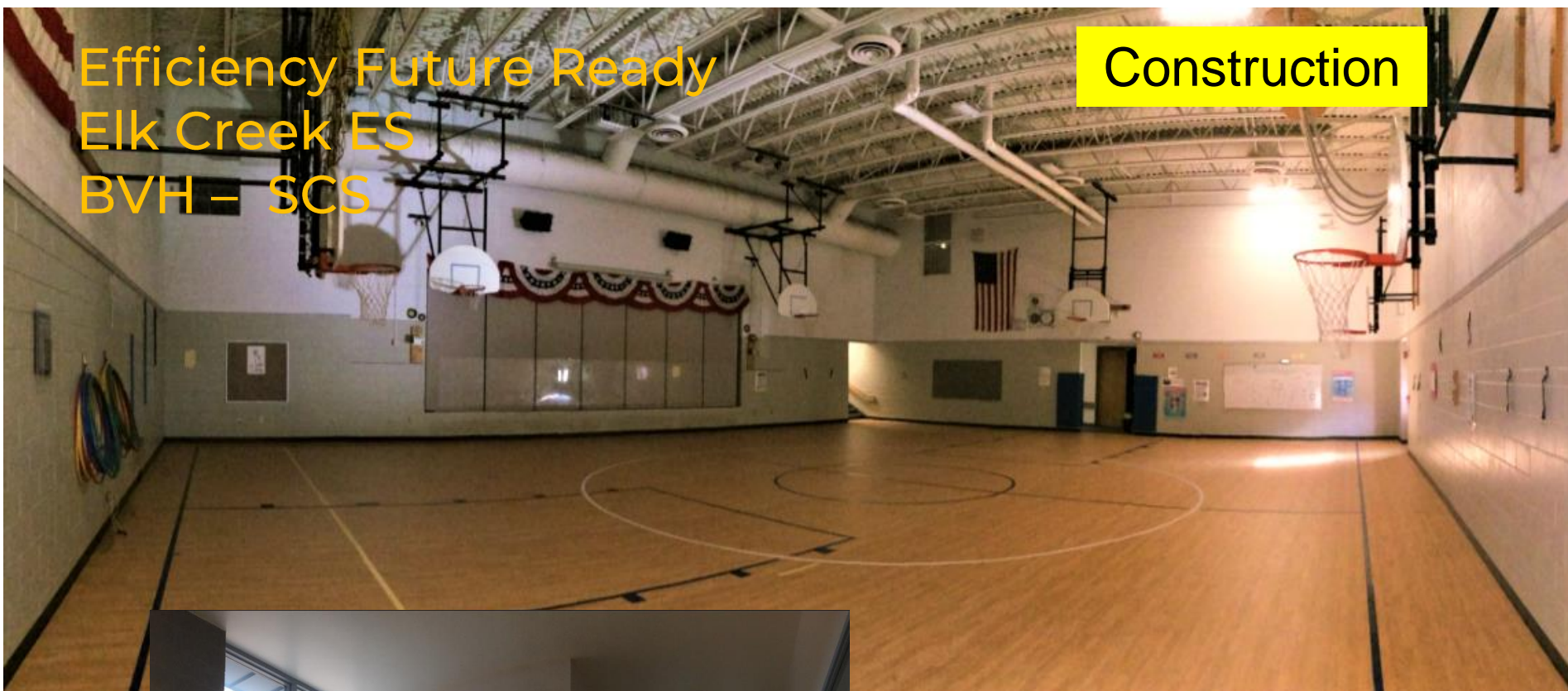
Construction

H&M – Singletrack



Efficiency Future Ready
Elk Creek ES
BVH – SCS

Construction



Efficiency Future Ready
Elk Creek ES
BVH – SCS

Construction



Efficiency Future Ready West Jefferson ES

BVH – Bryan

Construction



Efficiency Future Ready
West Jefferson ES
BVH – Bryan

Construction



Efficiency Future Ready Emory ES

Construction

Treanor HL– Crossland



Efficiency Future Ready
Red Rocks ES

Treanor HL- Crossland

Construction



Efficiency Future Ready Lakewood HS

HCM – AD Miller

Construction



Efficiency Future Ready Westgate ES

Construction

Treanor HL – AD Miller



Kitchen Equipment Install

January

Efficiency Future Ready Longview HS

Construction

Mellin & Associates – Singletrack



Efficiency Future Ready
Shelton ES

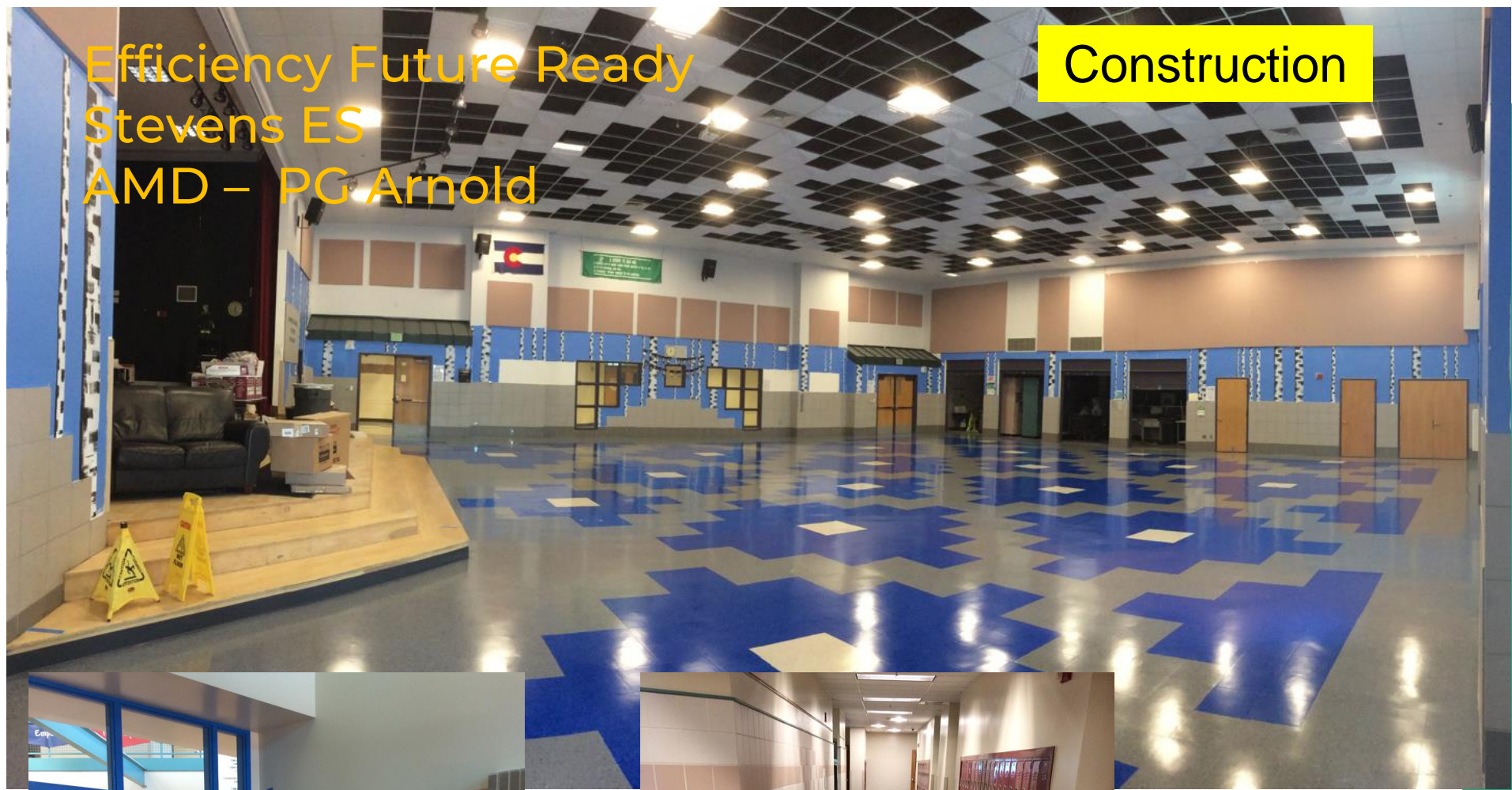
Construction

Mellin & Associates – Himmelman



Efficiency Future Ready
Stevens ES
AMD – PG Arnold

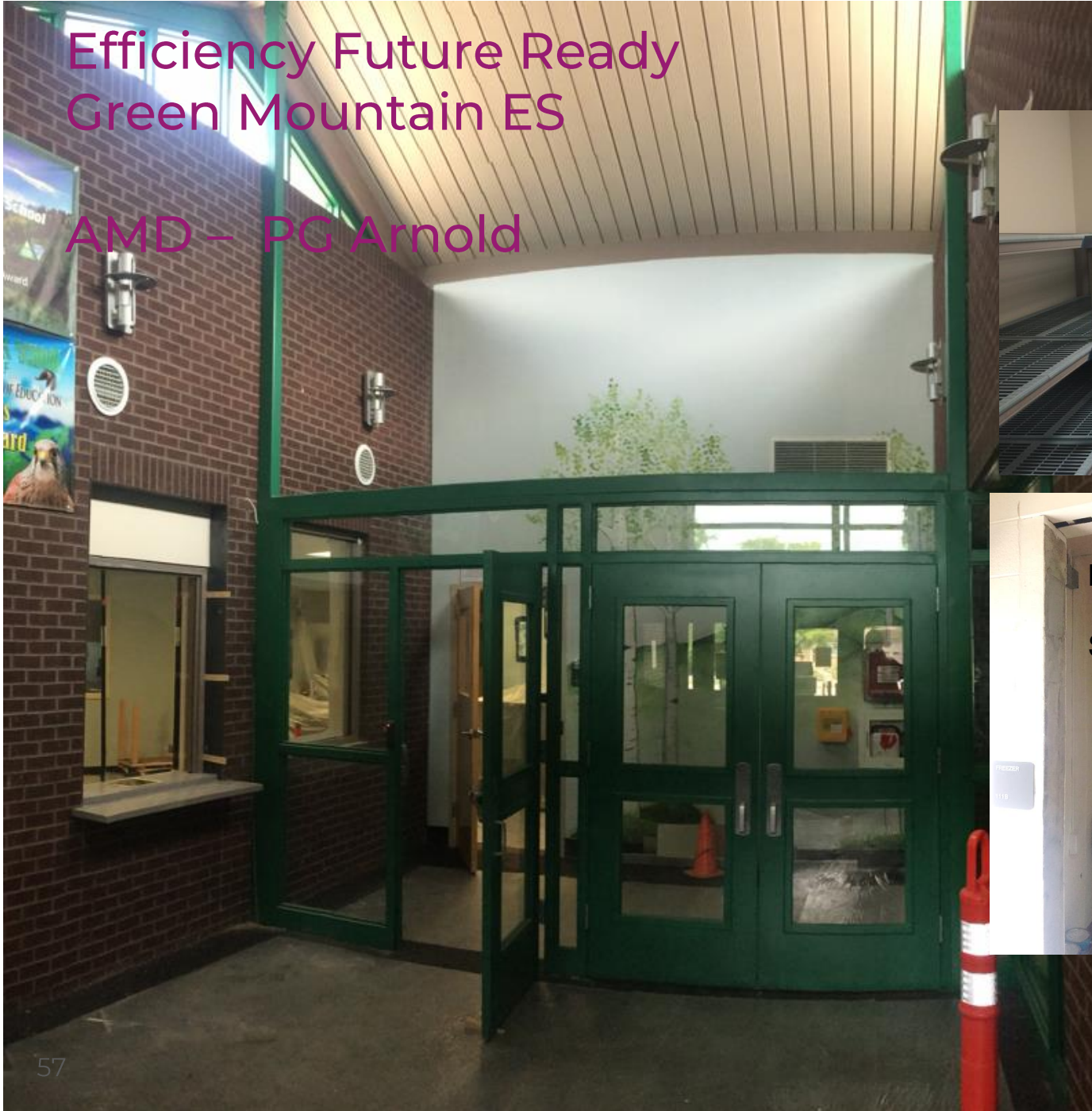
Construction



Efficiency Future Ready Green Mountain ES

AMD – PG Arnold

Construction



Efficiency Future Ready
Thomson ES

AMD – Bryan

Construction



Efficiency Future Ready
Stony Creek ES

Jordin Calahan

Construction



Efficiency Future Ready Stony Creek ES

Construction

Jordin – Calahan



Efficiency Future Ready Bear Creek HS

MOA – Crossland

Construction



Efficiency Future Ready Bear Creek HS MOA – Crossland

Construction



Efficiency Future Ready
Warder ES
RB+B – Golden Triangle

Construction



Kitchen Equipment Install

October



Efficiency Future Ready Warren Tech North

Construction

LOA – Golden Triangle



Efficiency Future Ready Arvada West HS

Construction

LOA – Golden Triangle



Efficiency Future Ready Bergen Valley ES

Construction

EUA – Interlock



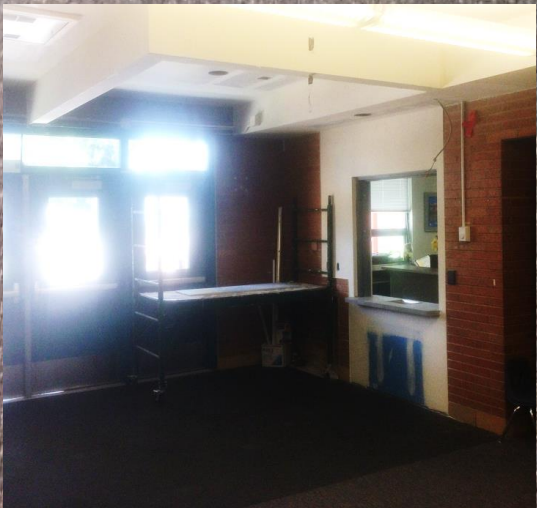
Efficiency Future Ready Slater ES

Eidos – Bryan

Kitchen Equipment Install

December

Construction



Efficiency Future Ready Wilmore Davis ES

Eidos – Mark Young

Construction



Kitchen Equipment Install

November



Efficiency Future Ready
North Arvada MS
Eidos – Bryan

Construction



Kitchen Equipment Install

December



Efficiency Future Ready
North Arvada MS
Eidos – Bryan

Construction



Efficiency Future Ready
Peck ES
Larson Incitti – AD Miller

Construction



Efficiency Future Ready
Secret ES

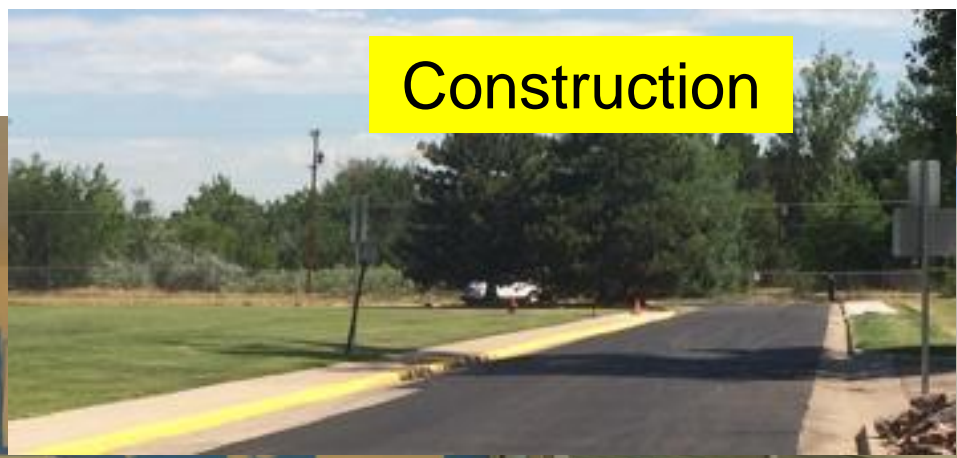
Larson Incitti – AD Miller

Construction



Efficiency Future Ready Creighton MS Larson Incitti – AD Miller

Construction



DW – Roofing -
Campbell ES & Pennington ES (Grabau),
Fairmount ES (FR) , Lakewood ES (DC), & Summit
Ridge MS (UM)
SR+DK



S Lakewood – 100%



Campbell – 100%



Pennington – 100%



Fairmount – 100%



Summit Ridge – 100%

DW Mechanical 2022 Campbell ES AHU & Chiller, Little ES RTUs & Van Arsdale ES RTU

Columbine Engineering – US Engineering

Campbell ES



Little ES



Van Arsdale ES



DW Paving 2022
Peiffer ES
JVA – Colorado Designsapces

Construction



DW Paving 2022
South Lakewood ES
JVA – Colorado Designsapces



DW Paving 2022
Thomson ES
JVA – Colorado Designsapes



DW Paving 2022
Falcon Bluffs MS
JVA – Colorado Designsapces



DW Paving 2022
Little ES
JVA – Colorado Designsapces



DW Paving 2022 Campbell ES

JVA – Colorado Designsapes



DW – Flooring I
Deer Creek MS

Construction

AMD – PG Arnold



DW – Flooring I
Summit Ridge MS

AMD – PG Arnold

Construction



DW – Flooring I
Falcon Bluffs MS

Construction

AMD – PG Arnold



DW – Flooring I
Peiffer ES

AMD – PG Arnold

Construction



DW – Flooring I

Construction

*Governor's Ranch ES, Mt Carbon ES,
Rooney Ranch ES*
AMD – SCS



Rooney Ranch ES



Mt Carbon ES



Governor's Ranch ES

DW – Flooring II
Van Arsdale ES

studiotrope – McCauley Constructors

Construction



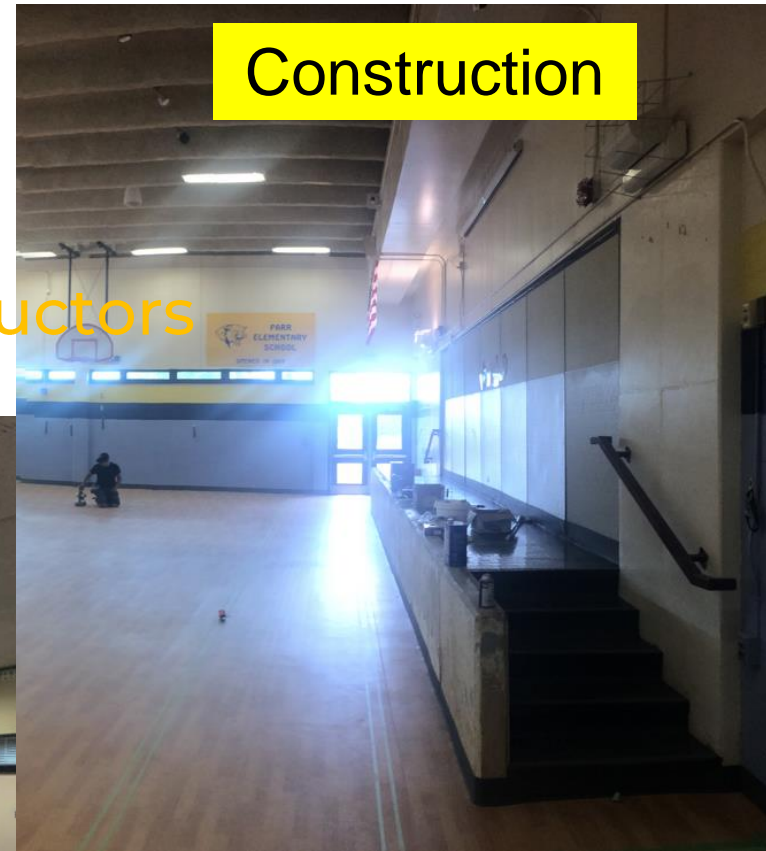
DW – Flooring II
Little ES
studiotrope – McCauley Constructors

Construction



DW – Flooring II Parr ES

studiotrope – McCauley Constructors



DW – Flooring II
Swanson ES
studiotrope – McCauley Constructors

Construction



DW – Flooring II
Glennon Heights ES
studiotrope – McCauley Constructors

Construction



DW – Flooring II
S Lakewood ES
studiotrope – McCauley Constructors

Construction



DW – Flooring II
Pennington ES
studiotrope – McCauley Constructors

Construction



DW Playgrounds II 2022

Lime Green – T2

Construction



Campbell ES



Fairmount ES

DW Playgrounds I 2022
Design Concepts – Arrow J



Governor's Ranch ES



Peiffer ES

DW Playgrounds I 2022
Design Concepts – Arrow J



Glennon Heights ES



Mt. Carbon ES

DW LED 2022

Ackerman – CMGC McKinstry

Construction Documents



1. Brady
2. Bradford North
3. Bradford South
4. Ute Meadows ES
5. Leawood ES
6. Normandy ES
7. Rooney Ranch ES
8. Creighton MS
9. Moore MS
10. Mandalay MS
11. Deer Creek MS
12. Lawrence
13. Weber ES
14. Meiklejohn
15. West Woods
16. Chatfield HS (Oct)
17. Dakota Ridge HS (Nov)

Security Glass Installation 11 - Schools

Swanson Glennon Heights
Arvada West S Lakewood
Campbell 30% Little
Fairmount Parr
Bear Creek K8 Pennington
Summit Ridge



2023

35 - Efficiency Future

Ready

&

DW projects

Wheat Ridge – Electrical SwitchGear

Ackerman Engineering – MV Powers

Estimate
\$325,000

7/7/22 Bid
\$265,300

Under
Estimate
\$59,700

100

Efficiency Future Ready Wheat Ridge HS

Eidos – TBD

Design
Development
Bid October



2023 New Efficiency Future Ready & DW Projects

Location	Sched	Description
UTE Meadows	9/1/2022	Late Summer Re-Bid Efficiency & Future Ready
Blue Heron	9/1/2022	Late Summer Re-Bid Efficiency & Future Ready
Mortensen	9/1/2022	Late Summer Re-Bid Efficiency & Future Ready
Shaffer	9/1/2022	Late Summer Re-Bid Efficiency & Future Ready
DW FA Upgrade	9/1/2022	FA Upgrade required by Fire Department - Pomona, D' Evelyn, Lakewood HS
DW LED	9/1/2022	Blue Heron, Mortensen, Shaffer, Bergen Valley
Swanson	9/1/2022	Efficiency & Future Ready
Van Arsdale	9/1/2022	Efficiency & Future Ready
Oberon	9/1/2022	Addition
Governors Ranch	9/1/2022	Efficiency & Future Ready
Bear Creek K-8	9/1/2022	Efficiency & Future Ready
Falcon Bluffs MS	9/1/2022	Efficiency & Future Ready
Pennington ES	9/1/2022	Add one section of roof to raise mech unit
Campbell	9/1/2022	Efficiency & Future Ready
Molholm	9/1/2022	Addition
Fairmount Mechanical	9/1/2022	Late Summer Re-Bid 2022 HVAC Project
DW Mechanical 2023	9/1/2022	Westwoods \$1,174,950 Bradford South \$1,304,100 Sobesky (old stevens) \$777,000 boiler priority may be

Location	Sched	Description
Glennon Heights	9/1/2022	Efficiency & Future Ready
Edgewater	9/1/2022	Addition
Ken Caryl	9/1/2022	Efficiency & Future Ready -
Little	9/1/2022	Efficiency & Future Ready
Parr	9/1/2022	Efficiency & Future Ready
S Lakewood	9/1/2022	Efficiency & Future Ready - 2 air handlers are shot - not in scope
Connections	9/1/2022	Efficiency & Future Ready
Coal Creek K8	9/1/2022	Efficiency & Future Ready
Warren Tech Central	9/1/2022	Efficiency & Future Ready -
Deer Creek/ Mandalay ffe / Moore MS ff	9/1/2022	Late Summer Bid Efficiency & Future Ready
Kendallvue	9/1/2022	Efficiency & Future Ready
Mt Carbon	9/1/2022	Efficiency & Future Ready
Peiffer	9/1/2022	Efficiency & Future Ready
Summit Ridge	9/1/2022	Efficiency & Future Ready
Drake Middle	9/1/2022	Efficiency & Future Ready
Bergen Meadow	9/1/2022	Efficiency & Future Ready
Dunstan MS	9/1/2022	Efficiency & Future Ready

2023

Miscellaneous

Program Verification & Feasibility Study

Fletcher Miller Special School

\$16,000,000

BOE Jun 08, 2022 - Special Meeting-Study/Dialogue Session
Capital Investments for Thriving Schools

Study to be Completed October 2022

Select A/E
Team

Interviewing
6 Firms

8/19

Next Meeting 9/15/22